

# Digital line scan cameras DVL / DVLC serie

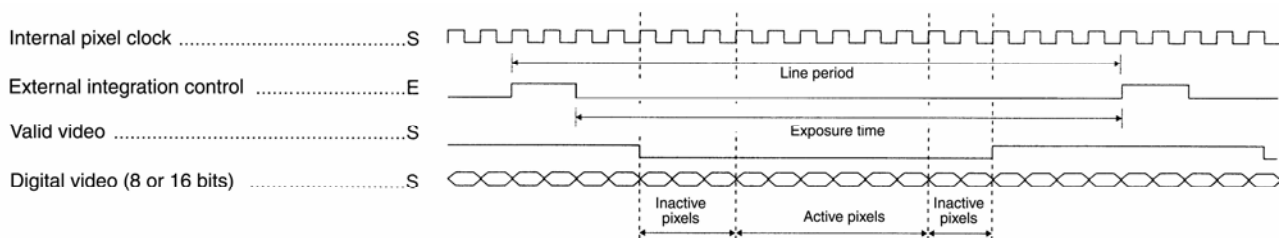


## Optoelectronic characteristics

Number of pixels	pixels	2098
Size of pixels	$\mu\text{m} \times \mu\text{m}$	14 x 14
Photo-sensitive area	$\text{mm} \times \mu\text{m}$	29,372 x 14
Sensitivity	Typical sensitivity at unity gain (lsb/lux.s)	300 000
Typical non-uniformity	% (without filtering)	$\pm 2,5$
Maximum non-uniformity	% (without filtering)	$\pm 5$
Pixel frequency	MHz	20
Maximum line frequency	kHz	9,09
Electronic shutter		yes
Antiblooming		no
RMS noise	lsb (16 bits)	11
Rise time	pixels	
Output video formats		16 bits RS422 8 bits RS422 16 bits LVDS (RS644) camera link
Lens mounts		F-Nikon 24x36 M42 screw mount Leica 39 with screws
Power supply	v	from 10 to 24
Power	w	
Fixing		4 possible mounting surfaces with 4 x M4 screws
Positioning		mechanical positioning by centring studs and reference surface.
Storage temperature	$^{\circ}\text{c}$	- 20 $^{\circ}\text{c}$ / + 80 $^{\circ}\text{c}$
Operating temperature	$^{\circ}\text{c}$	0 $^{\circ}\text{c}$ / + 50 $^{\circ}\text{c}$
Weight	g	780
Gain		programming via RS232 serial line, from 1 to 12
Offset		programming via RS232 serial line
Filtering		programming via RS232 serial line

# D V L 2 0 9 8 K

## Signals

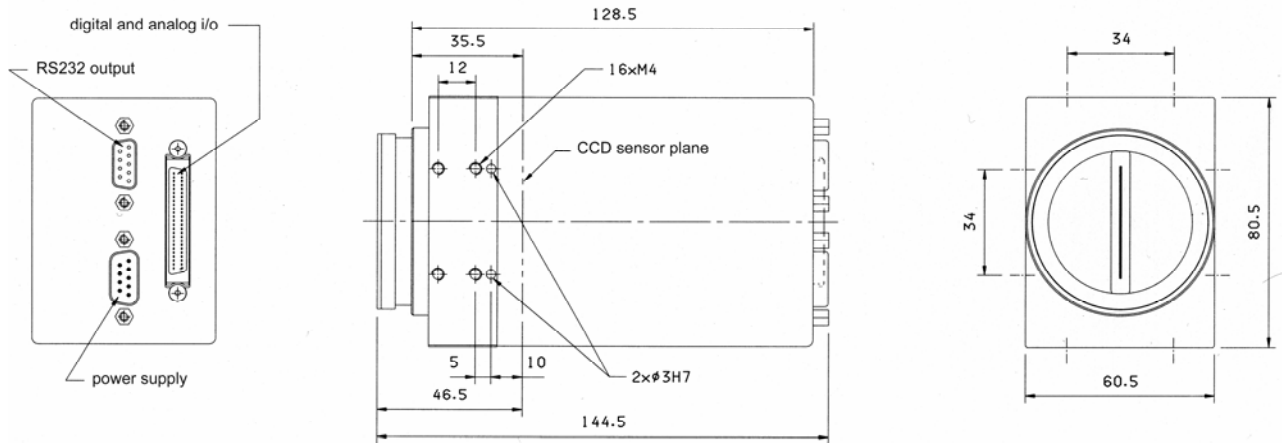


*For cameras without electronic shutter, exposure time is equal to line period.*

[www.lord-ing.com](http://www.lord-ing.com)

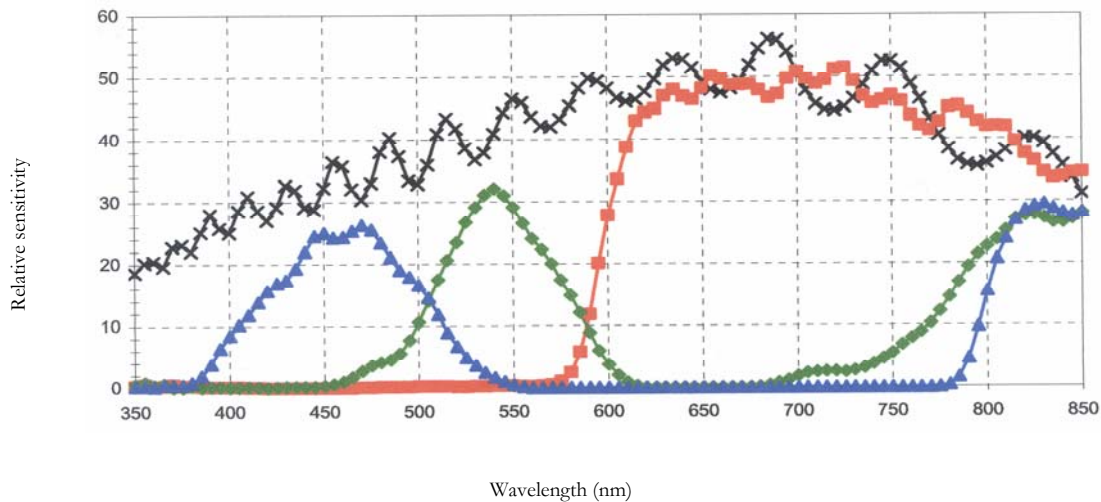
LORD Ingénierie - Z.A. de Marly - B.P. 110 - 91410 CORBREUSE - France  
Tél: +33 (0) 164 551 551 - Fax: +33 (0) 164 595 595 - Email: sales@lord-ing.com

## Mechanical characteristics (in millimeters)



Dimensions of cameras with F-Nikon mount.

## Spectral sensitivity characteristics (please refer to the black curve only)



## Ordering references

DVL2098K/S0/MF	Digital line scan camera 2098 pixels, 20 MHz, with electronic shutter, 8 bits RS422 output, and F-Nikon mount
DVL2098K/S0/M39	Digital line scan camera 2098 pixels, 20 MHz, with electronic shutter, 8 bits RS422 output, and Leica 39 mount
DVL2098K/S0/M42	Digital line scan camera 2098 pixels, 20 MHz, with electronic shutter, 8 bits RS422 output, and 42 mount with screws
DVL2098K/S0/PM	Digital line scan camera 2098 pixels, 20 MHz, with electronic shutter, 8 bits RS422 output, without mount
DVL2098K/S1/MF	Digital line scan camera 2098 pixels, 20 MHz, with electronic shutter, 16 bits RS422 output, and F-Nikon mount
DVL2098K/S1/M39	Digital line scan camera 2098 pixels, 20 MHz, with electronic shutter, 16 bits RS422 output, and Leica 39 mount
DVL2098K/S1/M42	Digital line scan camera 2098 pixels, 20 MHz, with electronic shutter, 16 bits RS422 output, and 42 mount with screws
DVL2098K/S1/PM	Digital line scan camera 2098 pixels, 20 MHz, with electronic shutter, 16 bits RS422 output, without mount
DVL2098K/S2/MF	Digital line scan camera 2098 pixels, 20 MHz, with electronic shutter, LVDS output, and F-Nikon mount
DVL2098K/S2/M39	Digital line scan camera 2098 pixels, 20 MHz, with electronic shutter, LVDS output, and Leica 39 mount
DVL2098K/S2/M42	Digital line scan camera 2098 pixels, 20 MHz, with electronic shutter, LVDS output, and 42 mount with screws
DVL2098K/S2/PM	Digital line scan camera 2098 pixels, 20 MHz, with electronic shutter, LVDS output, without mount
DVL2098K/S3/MF	Digital line scan camera 2098 pixels, 20 MHz, with electronic shutter, Camera Link output, and F-Nikon mount
DVL2098K/S3/M39	Digital line scan camera 2098 pixels, 20 MHz, with electronic shutter, Camera Link output, and Leica 39 mount
DVL2098K/S3/M42	Digital line scan camera 2098 pixels, 20 MHz, with electronic shutter, Camera Link output, and 42 mount with screws
DVL2098K/S3/PM	Digital line scan camera 2098 pixels, 20 MHz, with electronic shutter, Camera Link output, without mount

[www.lord-ing.com](http://www.lord-ing.com)

LORD Ingénierie - Z.A. de Marly - B.P. 110 - 91410 CORBREUSE - France  
Tél: +33 (0) 164 551 551 - Fax: +33 (0) 164 595 595 - Email: sales@lord-ing.com