

Digital line scan cameras DVL / DVLC serie

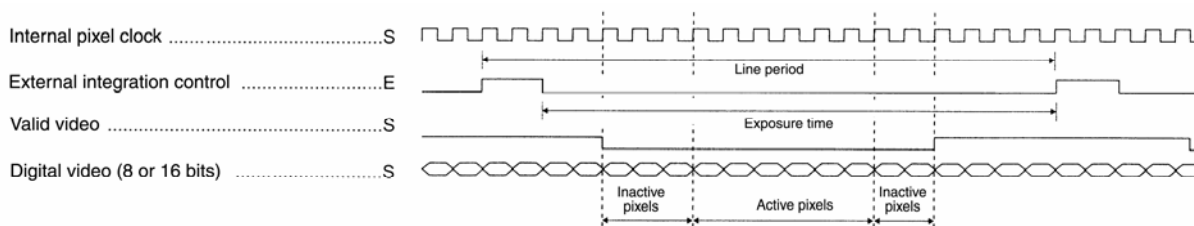


D
V
L
2
0
4
8
S

Optoelectronic characteristics

Number of pixels	pixels	2048
Size of pixels	$\mu\text{m} \times \mu\text{m}$	14 x 14
Photo-sensitive area	mm x μm	28,672 x 14
Sensitivity	Typical sensitivity at unity gain (lsb/lux.s)	1 310 000
Typical non-uniformity	% (without filtering)	± 2
Maximum non-uniformity	% (without filtering)	± 8
Pixel frequency	MHz	5
Maximum line frequency	kHz	2,34
Electronic shutter		yes
Antiblooming		no
RMS noise	lsb (16 bits)	36
Rise time	pixels	
Output video formats		16 bits RS422 8 bits RS422 16 bits LVDS (RS644)
Lens mounts		F-Nikon 24x36 M42 screw mount Leica 39 with screws
Power supply	v	from 10 to 24
Power	w	
Fixing		4 possible mounting surfaces with 4 x M4 screws
Positioning		mechanical positioning by centring studs and reference surface.
Storage temperature	$^{\circ}\text{C}$	- 20 $^{\circ}\text{C}$ / + 80 $^{\circ}\text{C}$
Operating temperature	$^{\circ}\text{C}$	0 $^{\circ}\text{C}$ / + 50 $^{\circ}\text{C}$
Weight	g	780
Gain		programming via RS232 serial line, from 1 to 2
Offset		programming via RS232 serial line
Filtering		programming via RS232 serial line

Signals

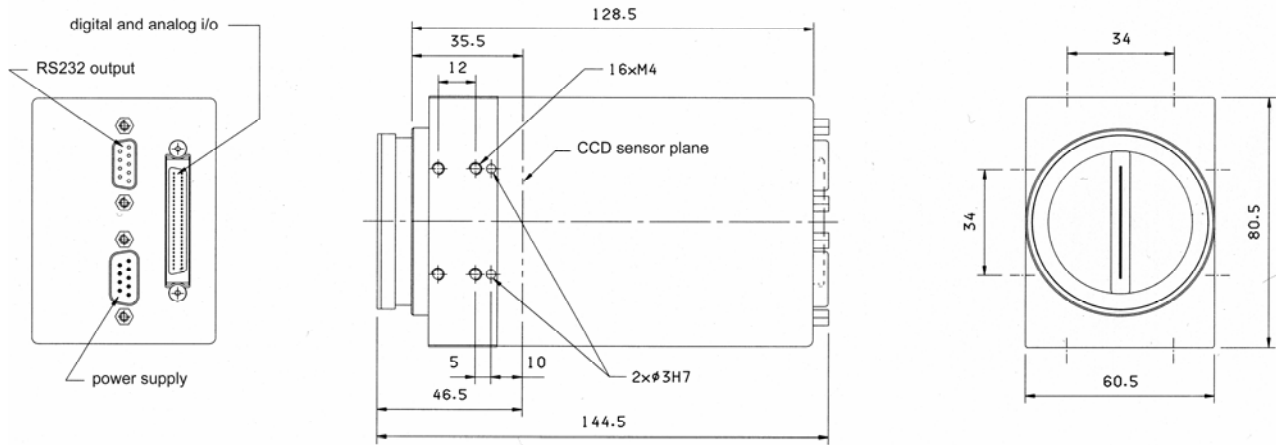


For cameras without electronic shutter, exposure time is equal to line period.

www.lord-ing.com

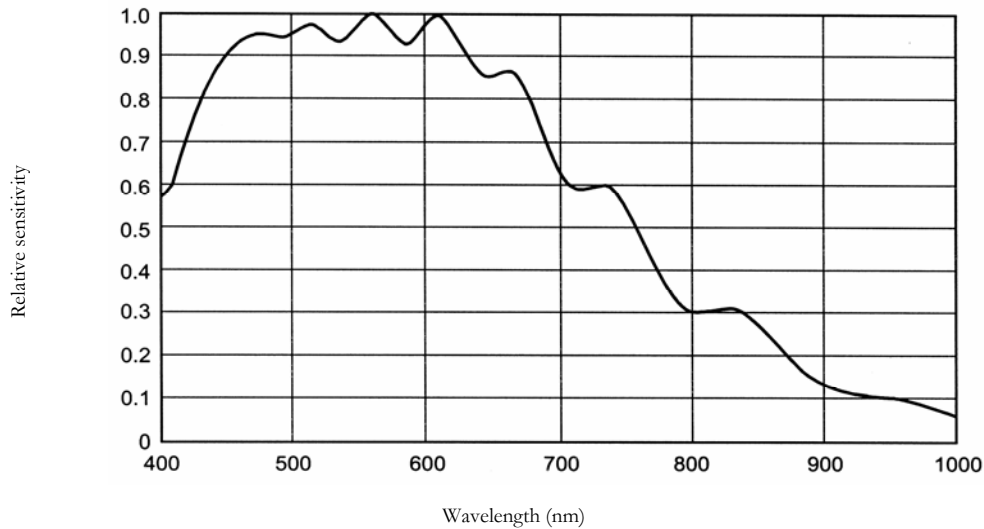
LORD Ingénierie - Z.A. de Marly - B.P. 110 - 91410 CORBREUSE - France
Tél: +33 (0) 164 551 551 - Fax: +33 (0) 164 595 595 - Email: sales@lord-ing.com

Mechanical characteristics (in millimeters)



Dimensions of cameras with F-Nikon mount.

Spectral sensitivity characteristics



Ordering references

DVL2048S/S0/MF	Digital line scan camera 2048 pixels, 5 MHz, with electronic shutter, 8 bits RS422 output, and F-Nikon mount
DVL2048S/S0/M39	Digital line scan camera 2048 pixels, 5 MHz, with electronic shutter, 8 bits RS422 output, and Leica 39 mount
DVL2048S/S0/M42	Digital line scan camera 2048 pixels, 5 MHz, with electronic shutter, 8 bits RS422 output, and 42 mount with screws
DVL2048S/S0/PM	Digital line scan camera 2048 pixels, 5 MHz, with electronic shutter, 8 bits RS422 output, without mount
DVL2048S/S1/MF	Digital line scan camera 2048 pixels, 5 MHz, with electronic shutter, 16 bits RS422 output, and F-Nikon mount
DVL2048S/S1/M39	Digital line scan camera 2048 pixels, 5 MHz, with electronic shutter, 16 bits RS422 output, and Leica 39 mount
DVL2048S/S1/M42	Digital line scan camera 2048 pixels, 5 MHz, with electronic shutter, 16 bits RS422 output, and 42 mount with screws
DVL2048S/S1/PM	Digital line scan camera 2048 pixels, 5 MHz, with electronic shutter, 16 bits RS422 output, without mount
DVL2048S/S2/MF	Digital line scan camera 2048 pixels, 5 MHz, with electronic shutter, LVDS output, and F-Nikon mount
DVL2048S/S2/M39	Digital line scan camera 2048 pixels, 5 MHz, with electronic shutter, LVDS output, and Leica 39 mount
DVL2048S/S2/M42	Digital line scan camera 2048 pixels, 5 MHz, with electronic shutter, LVDS output, and 42 mount with screws
DVL2048S/S2/PM	Digital line scan camera 2048 pixels, 5 MHz, with electronic shutter, LVDS output, without mount

www.lord-ing.com

LORD Ingénierie - Z.A. de Marly - B.P. 110 - 91410 CORBREUSE - France
Tél: +33 (0) 164 551 551 - Fax: +33 (0) 164 595 595 - Email: sales@lord-ing.com