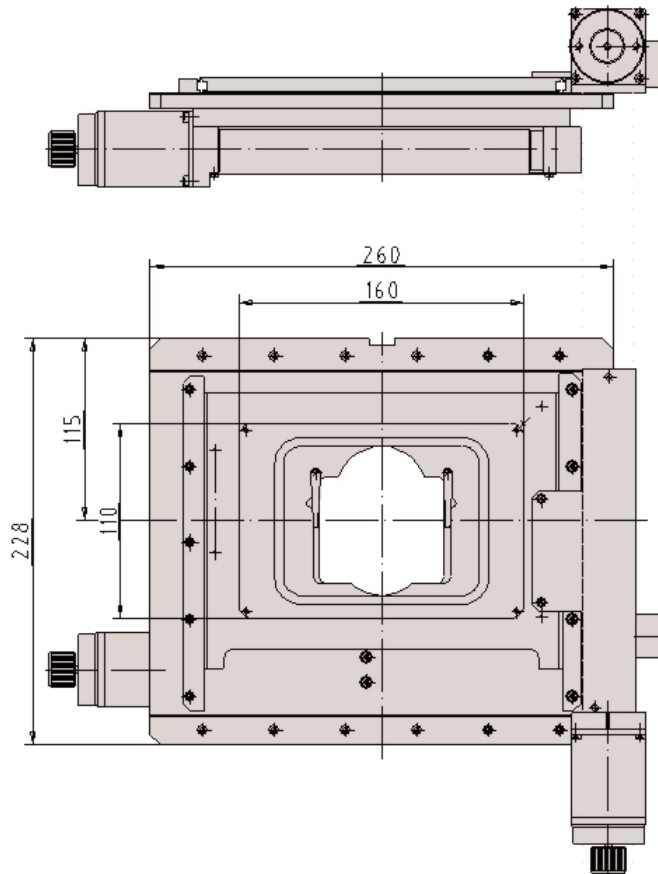


Microscope stages



SCAN
IM 120 x 100
for inverted microscopes



For the SCAN IM 120 x 100 (fig. 00-24-411-0000) design and dimensions vary in accordance with the inverted microscope the stage is going to be used on.

Specifications

Order information

Order numbers for various stages to specifically fit certain types of microscopes are available upon request

Accessories

Various stage inserts are shown on our data sheet "stage inserts for SCAN IM 120 x 100"

Other accessories on request

These scanning stages are specially designed for use on inverted microscopes. An insert frame for one standard glass slide 75 x 25 mm (3" x 1") is included with each stage.

Travel range:	120 x 102 mm (4,7" x 4")
Repeatability:	< 1 µm*
Accuracy:	+/- 3 µm*
Resolution:	down to 1,5 nm* (0,0015 µm)
Motor:	2-phase stepper motor
Max. travel speed:	45 mm/s, 1 mm lead screw pitch 90 mm/s, 2 mm lead screw pitch 180 mm/s, 4 mm lead screw pitch
Weight:	4.000 g

Scanning stages of the SCAN IM 120 x 100 series are available for all current inverted microscopes.

* Specifications valid with MÄRZHÄUSER stage controller only

For more detailed information, please visit our web-site at: www.marzhauser.com

Märzhäuser GmbH & Co. KG
In der Murch 15
35579 Wetzlar-Steindorf
Tel.: +49 (0) 64 41/91 16-0
Fax: +49 (0) 64 41/91 16-40
eMail: info@marzhauser.com
www.marzhauser.com